

Wm. BROADY & SON LIMITED

ENGLISH STREET · HULL

Telephone 29894 (3 lines)

COPPERSMITHS : ELECTRICIANS : REDUCING VALVE MANUFACTURERS
BRASS FINISHERS & FOUNDERS

... hope you have enjoyed this match ... and if you want to enjoy
"matchless" service and quality come to us for your requirements — we
"Tackle" anything and are never "Off-side" — and our "Goal" is to give
SATISFACTION TO YOU !

HULL CITY A.F.C.

BOOTHFERRY
PARK · HULL



Official Programme



v
SWINDON TOWN

Saturday, 15th APRIL, 1961

Kick-off 3-0 p.m.

SUPPORT YOUR LOCAL INDUSTRY

Ask your repairer for

ManTan SOLE LEATHER

The Leather with the guaranteed wear

THOMAS HOLMES & SONS LIMITED · SCULCOATES · HULL

SCOREBOARD

<p>A England <u>3</u> Scotland <u>0</u></p> <p>B Brad'd City <u>0</u> Bury <u>0</u></p> <p>C Bristol C. <u>0</u> Tranmere <u>0</u></p> <p>D Grimsby <u>2</u> Torquay <u>1</u></p> <p>E Notts. C. <u>2</u> Shre'bury <u>0</u></p> <p>F Barnsley <u>1</u> Ches'rfield <u>0</u></p> <p>G B'mouth <u>0</u> Walsall <u>1</u></p> <p>H Colchester <u>0</u> Port Vale <u>0</u></p> <p>J Newport <u>0</u> Southend <u>2</u></p> <p>K Q.P.R. <u>3</u> Halifax T. <u>1</u></p> <p>L Reading <u>0</u> Brentford <u>0</u></p> <p>M Peterboro' <u>2</u> Accrington <u>0</u></p>	<p>N Southport <u>2</u> York City <u>1</u></p> <p>P Blackpool <u>1</u> Newcastle <u>0</u></p> <p>Q Leicester <u>0</u> Fulham <u>1</u></p> <p>R Man. Utd. <u>2</u> Birming'm <u>1</u></p> <p>S Norwich C. <u>1</u> Liverpool <u>0</u></p> <p>T Portsm'th <u>1</u> Scunth'rpe <u>0</u></p> <p>U Sheff. Utd. <u>1</u> South'ton <u>0</u></p> <p>V Sunderland <u>1</u> Derby C. <u>1</u></p> <p>W Aston Villa <u>0</u> Preston <u>0</u></p> <p>X West Ham <u>0</u> Man. City <u>0</u></p> <p>Y Hull <u>4</u> St. Helens <u>5</u></p> <p>Z Hull K. R. <u>0</u> Hudd'field <u>5</u></p>
--	---

DAILY DELIVERIES - Hull & District

RUDDOCK & SONS

WINES :: SPIRITS :: BEERS :: MINERALS

For Price List - - PHONE 37008

AUSTIN

at . . .

CORNELIUS PARISH LTD.

"PARISH'S" for PERSONAL SERVICE

ANLABY ROAD, HULL

Tel. 32800

Hull City Association Football Club Ltd.

BOOTHFERRY PARK, HULL

Telephone 52195-6

Directors:

Chairman: HAROLD NEEDLER

Vice-Chairman: R. E. BUTTERY

G. H. NEEDLER

JOHN NEEDLER

W. R. SMITH, M.B.E.

S. T. KERSHAW, M.B.E., J.P. G. T. RIGNALL

Manager: R. E. BROCKLEBANK

Secretary: C. LEE

Assistant Secretary: J. B. ADAMSON

MANAGER'S CORNER

Having extracted five points out of a possible six, we can say that our Easter programme was fairly satisfactory. Had we have defeated Chesterfield at Boothferry Park on Easter Monday we would have joined the Spurs in being the only Clubs to take maximum points. There is no doubt that we ought to have won the return match with Chesterfield fairly comfortably, as we lost a two goal advantage, and failed to take several other really good opportunities.

After surrendering a lead of two goals to Chesterfield, we journeyed to Brentford on the Saturday, and at the interval faced a similar position as that of the 'Spireites', of having a two goal deficit.

A transformation in the second half, by being more penetrative, brought about such a change that the 'Tigers' wiped out the two goals and nearly came to recording a shock win.

This drawn game at Brentford was indeed a good result from the 'Tigers' point of view, particularly as we suffered a two goal reverse and then opened up a defence that had not conceded a goal in their last six matches. In fact we finished much stronger than the 'Bees' and had them very worried before the final whistle.

BOB BROCKLEBANK.

she's scored
a goal with
her
cooking!



Hot meals no longer present a problem in this family. Thanks to her new Automatic Electric Cooker, Mrs. Jones now has more time to get out and about and she knows that, when she returns home, a perfectly cooked meal will be ready for her hungry family.



THANKS TO THE AUTOMATIC TIME SWITCH

This is the auto-timer which can be set to switch the cooker on, cook the meal and switch off again. Just set the timer, put the food in the oven and you can leave your home without a care in the world.



make cooking easier— go automatic - - -

go electric



For full details enquire at your nearest Electricity Service Centre.

THE YORKSHIRE ELECTRICITY BOARD

RICHARDSON (HULL) TRANSPORT CO.

PICKERING ROAD HAULAGE LTD.

The HULL - LONDON TRUNK SERVICE WHICH HAS BEEN ESTABLISHED for 25 YEARS

ANYTHING FROM 1 CWT. TO 200 TONS DAILY

TWICE WEEKLY SERVICE TO SOUTHAMPTON

82 - 86 PICKERING ROAD, HULL Telephone: 52216 (3 lines)

also at 178 TOWER BRIDGE ROAD, LONDON, S.E.1 Telephone: HOP 0303/4

WAREHOUSING ACCOMMODATION IN HULL

NIGHTLY TRUNK SERVICE

BETWEEN

HULL and GLASGOW

Connecting Services to all parts of Scotland and also to E. Yorkshire and N. Lincolnshire

HULL & GLASGOW ROAD CARRIERS LTD.

HULL OFFICE & DEPOT
TRANSPORT HOUSE
CLARENCE ST.
Tel. 32902/2

GLASGOW OFFICE & DEPOT
146 KENNEDY ST.
Tel. BELL 4699-2573

CLUB MATTERS

Junior Football:

There was plenty of excitement and really good football at Boothferry Park last Monday evening when our Minor XI beat Blackburn Juniors 2—0 in the final of the 'Kestrel Cup', and I am sure those who supported this match thoroughly enjoyed the clever play of these up-and-coming youngsters. The 'curtain raiser' too provided an opportunity of seeing some very young players in action and they are to be complimented on their display.

East Riding 'Senior' Cup:

The final of this competition will be played at Boothferry Park next Saturday, April 22nd, Kick-Off 3 p.m., the contestants being Bridlington Town and Kingburn Athletic. It was expected that the Final would find the two Bridlington Clubs, Town and Trinity in opposition, but Kingburn Athletic thought otherwise and their fine win 3—2 over Bridlington Trinity last weekend gives them the right to oppose the strong Yorkshire League—1st Division side in the Final. This should be a match well worthy of your support. The usual Reserve team admission charges will apply—All must pay.

Our Visitors:

A very warm welcome is extended to our Southern friends, Swindon Town this afternoon, who are making only their second visit to our City—their previous visit being on 1st September 1958.

Due to our being engaged in the F.A. Cup on January 7th, our visit to Swindon had to be re-arranged, and was played on Wednesday evening, April 12th, and as these notes were prepared prior to the result being known we are unfortunately unable to make any comment on the game, but we hope the 'Tigers' have maintained their recent successful run. Out of the last nine games played we have won 5; drawn 3 and lost 1.

Our visitors are unfortunately in the 'relegation' zone, and we can expect both the games with them this week to be keenly contested, as every possible point is of great value to them in their struggle to avoid dropping back to the Fourth Division.

Swindon were formed in 1881 and became a professional Club in 1894 operating in the Southern League. They became one of the original members of the Football League Division 3 on its formation in 1920. They are popularly known as 'The Moonrakers', 'The Railwaymen' and 'The Robins'. Until the formation of the new Third Division in 1958-59 all their football was confined to Division 3 (South). In 1958-59 they occupied the 15th position in the Final League Table and last season the 16th position.

League honours have evaded them and the highest position they have attained in the League is fourth place in 1924-25; 1946-47; 1948-49 and 1957-58. They have, however, been F.A. Cup Semi-finalists on two occasions in 1910 and 1912.

Although lowly placed they have recently been showing good form and their 3—0 defeat of Grimsby Town last Saturday was full of merit.

FOSTER & PLUMPTON LIMITED

Branches at:

258a HESSLE ROAD, :: HULL

Telephone 37303

310a Holderness Road, Hull. Tel. 20107 322 Southcoates Lane, Hull. Tel. 13672
67 Porter Street, Hull. Tel. 20374 44 Elm Bridge Parade, Greatfield Estate,
90 Greenwich Ave., Bilton Grange Estate, Hull. Tel. 76403
Hull. Tel. 74193 122 Shannon Road, Longhill Estate, Hull.
4 Samman Road, Beverley. Tel. 80217 Tel. 78145

STILL & CINE PHOTOGRAPHIC EQUIPMENT SUPPLIED

Specialists in Colour Photography

STILL & CINE PROJECTOR HIRE SERVICE



TELEPHONE 79432

**SHEDS · GARAGES
GREENHOUSES . . .**

BUILDINGS YOU CAN BE PROUD OF THAT COST NO MORE

SEND FOR FREE ILLUSTRATED CATALOGUE

CASH OR EASY TERMS

F. NORMAN BREWER LTD.

DEPT. F, PRESTON LANE, BILTON, Near HULL

Boddy's Luxury Tours

Excursions starting from 70 MORRILL STREET, HULL. Tel. 31388

DAY TOURS INCLUDE:

**LAKE DISTRICT : NEW BRIGHTON : SOUTHPORT
MORECAMBE : STRATFORD-on-AVON : HARROGATE
The DUKERIES : REDCAR : MATLOCK : MYSTERY TOURS**

Passengers may be picked up at Fiveways, Boothferry Road, and Haworth Arms, Beverley Road, if on line of route.

BODDY'S MOTORS

**COACHES FOR
PRIVATE HIRE**

AFTER THE WARMTH OF A GOOD GAME

TO THE WARMTH OF HOME

LET

Kingston Plumbers Ltd.

**FERNDALE AVENUE,
WILLERBY.**

install a MODERN SMALL BORE HEATING SYSTEM

For Details Please Ring 57276

PEN PICTURES OF SWINDON TOWN PLAYERS

SAM BURTON (*Goalkeeper*). Product of local football joining Swindon in 1945. Played for the Wilts. junior eleven which reached the final of Counties tournament. Stands 6ft. weighs 13½ stone.

KEN JONES (*Right-back*). Signed last month from Crystal Palace. After one game in the Reserve team he has made the right-back position his own. Born in Wales he has played in the Welsh Under-23 trials.

JOHN TROLLOPE (*Left full-back*) A local lad, aged 17. Has progressed through Swindon Schoolboy and Swindon Town Junior sides. Made his first team debut at the beginning of this season and has only missed one match since. A good prospect. Height 5' 9" Weight 10st. 12lbs.

KEITH MORGAN (*Right-half*). Another teenager produced through the ranks of the 'Robins' youth teams. A County youth player he made his debut in 1958-59 season. He stands 6' 1" weighs 12½ stone.

MAURICE OWEN (*Centre-half*). Shortly after signing as a professional from Swindon in 1947, he was the target for many offers from Clubs in the First Division, two of them being Wolves and Arsenal. He stands 5' 11" weighs 11 stone.

JOHN BELL (*Left-half*). Joined the 'Robins' this 'Close Season' from Stirling Albion the Scottish Club. John was born in Edinburgh and he stands 5' 10" weighs 12 stone.

DAVID CORBETT (*Outside-right*). Product of the 'Robins' youth teams making his debut in 1958-59 season. This teenager is a County Youth player. Stands 5' 8" weighs 10½ stone.

ERNIE HUNT (*Inside-right*). Made his debut last season. This teenager was on the ground staff before he turned pro' last season on his seventeenth birthday. Born in Swindon, Ernie stands 5' 9" weighs 10½ stone.

MICHAEL SUMMERBEE (*Centre-forward*). Michael signed pro' on his seventeenth birthday after being on the ground staff. Made his debut last season. Born in Cheltenham, Michael stands 5' 10" weighs 11stone.

BOB WOODRUFF (*Inside-forward*). A local lad who joined the 'Robins' from the Swindon schoolboy team that did so well in the National team Schoolboys Cup. He stands 5' 11" weighs 11 stone.

FREDDIE JONES (*Outside-left*). Signed from Brighton in January of this year. Was formerly with Arsenal. Born in Cardiff but has made several appearances for the Welsh Under-23 Team including a game this season against England.



NEWBOULL

OVER 1200 SHOPS SUPPLIED

*Always
ask for:*

**HULL
BREWERY
ALES**



*"The Sign of
Good ale"*

R

HULL C

FISHE

2
DAVIDSON

4
McMILLAN

5
FEASEY

7
CLARKE

8
COLLINSON

9
CHILTON

Referee — W. CROSSLEY
(Lancaster)



11
JONES, F.

10
WOODRUFF

9
SUMMER

6
BELL

5
CHAMBER

3
TROLLOPE

BURTON

L

SWINDON

KWALFISH ALLOY BOARDS

J. E. ELTHERINGTON & SON
(ALUMINIUM) LTD.

Official Aluminium Stockists — SHEETS, TUBES, BARS AND EXTRUSIONS

15 PEMBERTON STREET, DANSOM LANE, HULL

Telephone: HULL 29093

LD'S

BREAD AND CONFECTIONERY

LIED IN HULL AND DISTRICT



LL CITY

Colours—Amber & Black

L

FISHER

3
GARVEY

5
EASEY

6
BULLESS

9
HILTON

10
PRICE

11
CRICKMORE



Linesmen —
Amber Flag — J. SHAW
Red Flag — F. E. BURROWS

9
IMERBEE

8
HUNT

7
CORBETT

5
MBERLAIN

4
MORGAN

2
JONES, K.

URTON

ON TOWN

R

Colours—Red & White

I, 2 or X

However erratically
your team plays,
there are always
two safe Bankers

in

FORD and HARBOUR MOTORS LTD.

MAIN **FORD** DEALER

For
OVER 25 YEARS

172 ANLABY ROAD,
HULL

TELEPHONE 27564

REDIFFUSION

THE WORLD'S LARGEST SOUND & VISION SERVICE ORGANISATION

DETAILS, WITHOUT OBLIGATION, from

151/159 BEVERLEY ROAD, HULL - TELEPHONE No. 43131

DON'T TAKE A GAMBLE ON THE RESULT
Buy your next car with confidence from
the most reputable dealers in the city

AUTO SERVICES (HULL) LTD.
73 Anlaby Road, HULL.

You can forecast the result
with

STORRILUX
DURABLE FULL GLOSS PAINT

A perfect defence against weather conditions, long lasting combines
beauty with protection, THE RESULT ALWAYS PLEASURES

STORRY SMITHSON & CO. LTD.
PAINT, ENAMEL & VARNISH SPECIALISTS SINCE 1831
BANKSIDE WORKS, HULL Telephone 41441

. . . about that new bicycle

IT'S ABOUT TIME YOU SAW THE NEW MODELS WITH ALL THE
LATEST IMPROVEMENTS. CLIFF PRATT AFTER SALES SERVICE KEEPS
YOU ON THE ROAD.

- * 30 years experience to guide you. * Complete overhaul & repair service
- * Over 100 models to choose from. * Full range of accessories always in stock

Choose your new cycle from:

CLIFF PRATT 84 SPRING BANK, HULL
TELEPHONE 11666
Also at 430 - 432 HESSLE ROAD, HULL. TELEPHONE 38481

PHONE **A D C** 20119
VEHICLE BUILDERS LTD.

Motor Body Builders
Repairers and
Coach Painters

Builders of Insulated Vans
and Alloy Bodies

169 FOUNTAIN ROAD • HULL

FOOTBALL LEAGUE

1960	DIVISION 3	F.	A.
Aug. 20	Colchester United	A	0 4
22	Newport County	H	5 1
	(Collinson 2, Clarke, Chilton, Morris)		
27	Grimsby Town	H	2 3
	(McMillan, Clarke)		
29	Newport County	A	1 3
	(Clarke)		
Sept. 3	Southend United	A	1 3
	(Chilton)		
5	Bournemouth & B.A.	H	2 0
	(Chilton, King)		
10	Reading	A	4 2
	(Clarke 2, McMillan, Chilton)		
12	Bournemouth & B.A.	A	2 2
	(Price 2)		
17	Coventry City	H	1 1
	(Chilton)		
19	Barnsley	H	2 0
	(McMillan, Price)		
24	Bristol City	A	2 1
	(Price, Gubbins)		
28	Barnsley	A	0 1
Oct. 1	Queen's Park R.	H	3 1
	(Chilton, 3)		
3	Notts County	H	3 1
	(Price, Chilton, Gubbins)		
8	Bury	H	0 1
15	Walsall	A	0 1
22	Shrewsbury Town	H	3 1
	(Chilton 2, Sewell)		
29	Halifax Town	A	0 3
Nov. 12	Watford ... (Price 2)	A	2 2
19	Brentford	H	3 0
	(Price, Chilton, Bullless)		
Dec. 3	Torquay United	H	2 3
	(Crickmore, Stocks)		
10	Port Vale ... (Chilton)	A	1 4
17	Colchester United	H	1 1
	(Sewell)		
26	Bradford City	A	0 0
27	Bradford City	H	3 0
	(Sewell, Price, Gubbins)		
31	Grimsby Town	A	0 2
1961			
Jan. 14	Southend United	H	0 1
28	(4) Tranmere R.	H	4 2
	(Price 2, Sewell, Gubbins)		
Feb. 4	Coventry City	A	0 4
13	Bristol City	H	3 3
	(Chilton, Clarke, Gubbins)		
18	(5) Queen's Park R.	A	1 2
	(King)		
25	Torquay United	A	2 1
	(Crickmore, Price)		
Mar. 4	(6) Walsall	H	2 1
	(Sewell, Clarke)		
11	Shrewsbury Town	A	0 0
18	(S.F.) Halifax Town	H	4 2
	(Chilton 2, Price, Clarke)		
24	Tranmere Rovers	A	0 1
31	Chesterfield	A	2 1
	(Chilton 2)		
April 1	Watford	H	3 2
	(Holah, Crickmore, Collinson)		
3	Chesterfield	H	2 2
	(Clarke 2)		
8	Brentford	A	2 2
	(Price, Bullless)		
12	Swindon Town	A	1 1
	(Crickmore)		
15	Swindon Town	H	
20	Reading	H	
22	Bury	A	
27	Notts County	A	
29	Port Vale	H	

NORTH REGIONAL LEAGUE

1960		F.	A.
Aug. 20	Darlington	H	2 1
	(Clarke, Shiner)		
24	Sunderland	A	1 4
	(Crickmore)		
29	Sunderland	H	0 3
Sept. 3	Grimsby Town	H	1 4
	(Own Goal)		
7	Lincoln City	A	2 4
	(Shiner, Stocks)		
17	Hartlepoons United	A	1 2
	(Sewell)		
24	Hartlepoons United	H	5
	(King 3, Shiner Sewell)		
26	Port Vale	A	0 2
Oct. 1	Carlisle United	A	1 1
	(Stocks)		
8	Crewe Alexandra	A	2 2
	(Morris 2)		
15	Workington	H	4 0
	(Shiner, Holah, Sewell and Crickmore)		
22	Rotherham United	A	0 2
29	Bradford P.A.	H	5 2
	(Shiner 2, Colgrave 2, Morris)		
Nov. 12	Middlesbrough	H	0 2
19	Accrington Stanley	A	4 2
	(Nicholson 3, Holah)		
26	Barrow	H	2 1
	(Nicholson, Colgrave)		
Dec. 3	Scunthorpe United	A	1 3
	(Morris)		
10	York City	H	3 2
	(Gubbins, King, Brown)		
17	Darlington ... (Morris)	A	1 2
26	Lincoln City	H	6 1
	(Morris 3, Nicholson 2, Cowling)		
1961			
Jan. 14	Grimsby Town	A	2
	(Barmby, Crickmore)		
21	Bradford P.A.	A	2 1
	(Shiner, Crickmore)		
Feb. 4	Port Vale	H	5 4
	(Crickmore 3, Morris 2)		
18	Carlisle United	H	4 0
	(Shiner 2, Sewell 2)		
25	Scunthorpe United	H	2 3
	(Gubbins 2)		
Mar. 4	Workington	A	2 0
	(Gubbins, Kennea)		
7	Doncaster Rovers	A	2 2
	(King, Holah)		
11	Rotherham United	H	3 1
	(Shiner, Holah, Kennea)		
13	Bradford City	H	5 0
	(Holah 3, Kennea 2)		
20	Bradford City	A	3 0
	(King 2, Shiner)		
25	Halifax Town	H	1 1
	(Holah)		
31	Stockport County	H	7 0
	(King 3, Sewell 2, Shiner 2)		
April 1	Middlesbrough	A	2 6
	(King, Dunford)		
3	Stockport County	A	2 2
	(Danby, Kennea)		
8	Accrington Stanley	H	2 0
	(Barmby, Shiner)		
15	Barrow	A	
17	Crewe Alexandra	H	
19	Halifax Town	A	
24	Doncaster Rovers	H	
29	York City	A	

These Fixtures are the copyright of The Football League Limited.

PERAMBULATORS · NURSERY FURNISHINGS
INVALID CHAIRS · COTS · CRADLES · TOYS

Babydom

Arthur A. Dixon

15 SAVILE STREET, HULL Tel. 36247

We attend to all the YOUNG "PLAYERS" NEEDS

CONCRETE BLOCKS CONCRETE PAVERS

ring

STEPNEY CAST STONE Co. LTD.

Beverley 80255 (2 lines)

KINGSTON HAULAGE CO. LTD. DAILY SERVICES

MIDLANDS
LANCASHIRE
WEST RIDING of YORKSHIRE

ECONOMY & EFFICIENCY

PECKS WHARF,
Wincolmlee,
HULL.

TELEPHONE 31078
31232

Kao Sing

Chinese Restaurant

46-48 JAMESON STREET

Corner of King Edward Street

HULL

Telephone: 289111

special !

THREE COURSE
LUNCHEON

3/6

11-30 A.M. TO 2-30 P.M.

Open Daily 11-30 a.m. to 11-30 p.m.

SUNDAY 12-30 to 11-30 p.m.

COMING ATTRACTIONS AT BOOTHFERRY PARK

North Regional League

HULL CITY RES. v. CREWE ALEXANDRA RES.

Monday Next, April 17th

Kick-Off 7 p.m.

Football League

HULL CITY v. READING

Thursday Next, April 20th

Kick-Off 7 p.m.

East Riding County F.A. Senior Cup—Final

BRIDLINGTON TOWN v. KINGBURN ATHLETIC

Saturday Next, April 22nd

Kick-Off 3 p.m.

Reserve Team Charges—All Must Pay

1960		F.A. CUPTIES		F.	A.	
Nov. 5	(1) v. Sutton Town (Price, Sewell, Gubbins)	Home	3	0		
26	(2) v. Darlington (Price)	Away	1	1		
28	(2) v. Darlington (Replay)..... (Chilton)	Home	1	1		after extra time.
Dec. 5	(2) v. Darlington—2nd replay at Elland Rd. (Price)		1	1		Leeds, abandoned after 90 minutes.
12	(2) v. Darlington—3rd replay at Doncaster		0	0		after extra time.
15	(2) v. Darlington—4th replay at Middlesbro' (Gubbins, King, Clarke)		3	0		
1961	Jan. 7 (3) v. Bolton Wanderers	Home	0	1		

FACTS AND FIGURES

Attendances and Gate receipts — Football League Matches:

HOME:—			Attendance	Receipts
Aug. 22nd	v. Newport County	...	9,811	£1,198 1 0
27th	v. Grimsby Town	...	14,252	£1,919 1 0
Sept. 5th	v. Bournemouth	...	8,496	£ 980 12 6
17th	v. Coventry City	...	10,374	£1,286 17 6
19th	v. Barnsley	...	10,527	£1,276 18 0
Oct. 1st	v. Queens Park Rangers	...	9,333	£1,135 7 0
3rd	v. Notts County	...	12,199	£1,533 10 0
8th	v. Bury	...	13,164	£1,716 8 6
22nd	v. Shrewsbury Town	...	9,095	£1,096 3 0
Nov. 19th	v. Brentford	...	7,798	£906 18 6
Dec. 3rd	v. Torquay United	...	6,175	£728 13 6
17th	v. Colchester United	...	6,047	£687 14 0
27th	v. Bradford City	...	13,949	£1,878 19 0
1961 Jan. 14th	v. Southend United	...	9,744	£1,160 1 6
28th	v. Tranmere Rovers	...	3,950	£421 14 0
Feb. 13th	v. Bristol City	...	7,077	£807 11 0
Mch. 4th	v. Walsall	...	7,118	£826 4 0
18th	v. Halifax Town	...	4,997	£547 5 6
Apr. 1st	v. Watford	...	7,267	£887 2 0
3rd	v. Chesterfield	...	7,162	£870 9 0
Average — Attendance 8,927.			Receipts £1,093 5 6	

AWAY:—			Attendance	Receipts
Aug. 20th	v. Colchester United	...	6,731	£ 778 6 6
29th	v. Newport County	...	7,347	£ 900 18 0
Sept. 3rd	v. Southend United	...	8,434	£ 995 19 0
10th	v. Reading	...	7,043	£ 951 17 3
12th	v. Bournemouth	...	5,315	£ 464 19 9
24th	v. Bristol City	...	14,899	£1,880 4 0
28th	v. Barnsley	...	4,840	£ 552 9 6
Oct. 15th	v. Walsall	...	10,125	£1,302 15 0
29th	v. Halifax Town	...	6,734	£ 790 13 6
Nov. 12th	v. Watford	...	13,746	£1,732 15 9
Dec. 10th	v. Port Vale	...	9,006	£1,153 6 0
26th	v. Bradford City	...	11,450	£1,374 18 0
31st	v. Grimsby Town	...	12,712	£1,746 18 0
1961 Feb. 4th	v. Coventry City	...	11,140	£1,421 15 9
18th	v. Queens Park Rangers	...	12,725	£1,701 6 6
25th	v. Torquay United	...	4,587	£495 6 3
Mch. 11th	v. Shrewsbury Town	...	8,698	£1,032 3 9
24th	v. Tranmere Rovers	...	12,260	£1,416 12 6
31st	v. Chesterfield	...	12,079	£1,422 6 3
Apr. 8th	v. Brentford	...	6,390	£793 19 9
Average — Attendance 9,313.			Receipts £1145 9 6	

**travel by Train to
BOOTHFERRY PARK**

Special services direct to the ground from Hull Paragon for 1st team matches. See local press for details.



**ADULTS . . 9d. RETURN
6d. SINGLE**

CHILD . . . 5d. SINGLE or RETURN

CHEAP TICKETS TO HULL

From many surrounding stations

HULL CITY SUPPORTERS CLUB

Headquarters: 505 Anlaby Road, Hull. Tel. 51281
Hon. Gen. Secretary: J. HARRISON, 21 Derwent Street, Tel. 11395

SUPPORTERS NOTES

Today congratulations are in order, and we thus proudly avail ourselves of the opportunity of saying "Jolly Good Show and Well Done" to our skipper Jock Davidson on celebrating, at Brentford on Saturday last his 250th first team appearance.

According to reports "Jock" turned in another lion-hearted display and we sincerely hope that for many seasons to come we shall see his familiar figure leading out our amber-clad warriors to the greeting of our signature tune 'Tiger Rag'.

Incidentally, it is interesting to note that on the occasion of our last two home games we have had requests for records to be played over our loud speaker system and whilst our selection of records is naturally limited we have been happy to oblige.

Finally, again our request, please let the boys know you are there this afternoon and thank you for your past encouragement.

ESSRAITCH.

FOOTBALL LEAGUE—Division 3

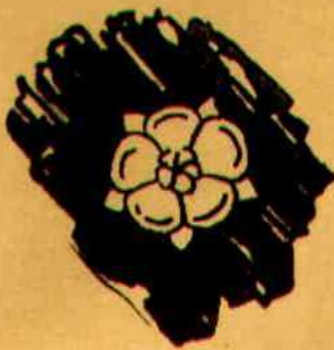
*Table compiled up to and including
Wednesday, April 12th, 1961*

Club	P	W	D	L	F	A	Pts
Bury	42	27	7	8	102	45	61
Walsall	42	25	5	12	89	56	55
Q.P.R.	41	22	9	10	78	53	53
Watford	42	18	11	13	78	68	47
Port Vale	42	17	12	13	93	74	46
Grimsby	41	18	10	13	69	61	46
Torquay	42	14	17	11	70	65	45
Notts. C.	42	18	9	15	74	73	45
Barnsley	40	19	6	15	72	69	44
Halifax T	41	14	16	11	65	68	44
Shrewsb'y	40	14	14	12	71	64	42
HULL C.	41	16	10	15	69	66	42
Newport	41	16	10	15	76	80	42
Coventry	41	14	11	16	73	74	39
Bristol C.	42	15	9	18	63	65	39
Brontford	41	12	15	14	52	60	39
B'rn'm'th	42	14	9	19	54	69	37
Swindon	41	11	13	17	56	53	35
S'thend U.	42	12	11	19	54	70	35
Tranmere	42	14	7	21	75	107	35
Reading	40	11	11	18	57	76	33
Brad. C.	42	10	12	20	58	81	32
Ches'field	42	10	10	22	60	77	30
Colchester	42	9	10	23	58	92	28

THE NORTH REGIONAL LEAGUE

*Table compiled up to and including
Monday, April 10th, 1961*

Club	P	W	D	L	F	A	Pts
M'lesb'gh	36	24	8	4	104	44	56
Port Vale	35	26	2	7	117	54	54
Sunderl'd	37	21	7	9	94	57	49
Scun. U.	36	19	8	9	81	45	46
Darl'gton	38	20	4	14	82	71	44
H'pools U	36	19	6	11	82	71	44
HULL C.	35	18	5	12	85	62	41
Brad. P.A.	36	16	8	12	92	53	40
Lincoln C.	37	17	6	14	73	69	40
Doncas. R	36	14	10	12	62	67	38
Roth. U.	35	17	3	15	85	69	37
Crewe A.	34	15	4	15	75	69	34
Grimsby	37	13	8	16	61	76	34
Carlisle U	34	11	9	14	57	66	31
Brad. C.	34	10	6	18	60	82	26
York C.	32	11	3	18	59	72	25
Acc. Stn.	35	11	3	21	49	93	25
Halifax T.	34	8	7	19	51	77	23
Work'ton	34	6	9	19	45	82	21
Stockport	36	8	5	23	41	112	21
Barrow	37	5	5	27	44	108	15



NATIONAL COAL BOARD

SOLID FUELS

FOR CHEAPER, BETTER FUEL

COAL - HARD COKE

ANTHRACITE - PHURNACITE

CONCRETE GARAGES

BUILT TO LAST — FULLY FIREPROOF

ERECTED COMPLETE WITH BASE AND ALL EXTRAS

"UP AND OVER" DOORS NOW AVAILABLE

SUTTON-upon-HULL CAST STONE Co. Ltd.

LEADS ROAD, SUTTON ON HULL

Telephone 13615

FOR HOMES OR HOLIDAYS

Write for FREE Brochure

"CARAVAN HOLIDAYS"

CARAVANS FOR SALE OR HIRE

All Leading Makes
New Caravans SUPPLIED

BERKELEY ENTERPRISES LTD.

46 WESTBOURNE AVENUE · HULL

Phones 43804 · 32946

Hull City School of Motoring

MORE FOR YOUR MONEY

Because you get, better instruction, quicker passes, safety dual control Cars, pay as you Drive (10/- deposit). No more lessons than necessary. Same car - same instructor for every lesson if desired. Each lesson lasts one hour. No time wasting - only one pupil in a car at any time - road instruction is the only way.

BOOK NOW "Unsurpassed Test Successes"

129 Beverley Road,

Tel. 43101

— — YOUR SUCCESS IS OUR SUCCESS — —

We drive every day, including Sunday, 9 a.m. to 9 p.m.



CYCLES & MOPEDS

HUNDREDS OF MODELS TO CHOOSE FROM — —
— — ALL LEADING MAKES SUPPLIED

Walk in Select your Machine
and Ride Away

NO

**FUSS
WAITING
ENQUIRIES**

JORDANS 

STORY STREET, HULL
PHONE 24131

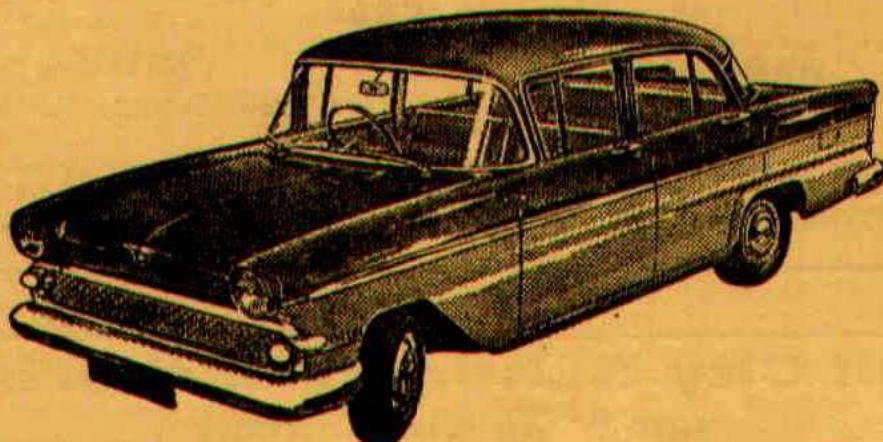
ROYAL AIR FORCE

We no longer talk about earning so much per day in the Service. We now talk about Warrant Officer Smith earning **£26** per week, or Corporal Jones earning over **£18** per week.

Incidentally, Warrant Officer Smith will retire at the age of 55 years with a gratuity of **£1,700**, free of tax, and a pension of **£11** per week.

R.A.F. RECRUITING CENTRE, Jameson Street, HULL.

Go one better —



with a Vauxhall
from Thompson of Hull Ltd.

230 - 6 ANLABY ROAD · KINGSTON UPON HULL · Tel. 23681 (6 lines)